

Water Meters / Flanged Maintenance and Repair Manual

Introduction

This user's manual provides information regarding the steps to which attention should be paid before, during and after installation of TURKOĞLU brand WOLTMAN type water meters. Please carefully read this user's manual before the installation of your meters. Keep your water meters under pre-determined environmental conditions.

Specifications of Woltman Water Meter

Water meters are devices that have been designed to continuously measure, memorize and display the volume of water flowing through it within the defined operating conditions. TURKOĞLU brand water meters are capable of measuring in accordance with all conditions stated in the product catalogues. You should pay attention to these issues before using your meters.

Handling and Storage

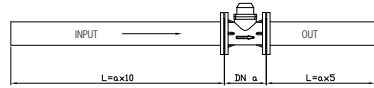
Water meters are very sensitive measurement instruments. It should not be dropped and exposed to intense shocks during handling. It should be stored away from excessive moisture and direct sunlight. Ambient temperature should be between 5°C and 50°C.

Installation

You must carefully select the place where you will install your water meter. You should protect your meter against freezing and direct sunlight.

Make sure that the inlet and outlet connection pipes of your meter are clean and appropriate.

In accordance with the flow profile sensitivity class specified on the indicator of your water meter, you must use a sufficient length of plain pipe at the inlet and outlet of your water meter.



*** The figure shows how to calculate the length of the plain pipe to be used at the inlet and outlet of a water meter with a nominal diameter of a in accordance with U10, D5 flow profile class. You should use appropriate installation tools during installation.



▲ Please wear protective gloves before starting to work



▲ Please wear your protective goggles.



*** Have the switches appropriate for use with you at all the times

Install valves, check valves, filters etc. required for your installation. Have parts such as bolts, nuts, washers, and gaskets, etc. to be used for the water meter and flange connection. Make sure that the parts you will use are not damaged. The arrow direction on the meter and the water flow direction of your installation should be in the same direction. Your water meters should be connected in accordance with the predetermined H (horizontal) or V (vertical) position marks.

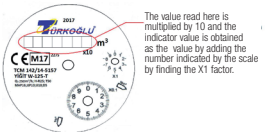
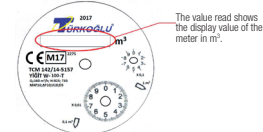
Commissioning The Product

After installation, slowly turn on the valves of your installation. Otherwise, you may encounter problems resulting from sudden pressure rises.

Reading Woltman Water Meter

DN50-DN65-DN80-DN100 YIGIT SERIES WOLTMAN TYPE

DN125-DN150-DN200-DN250-DN300 YIGIT SERIES WOLTMAN TYPE



Periodic Maintenance

TURKOĞLU WATER METERS have been designed so as to not cause any maintenance by the user.

Your water meter in question will measure accurately and as adjusted for 10 years after the first inspection and stamping process. Recalibration maintenance should be performed by any authorized laboratory until the end of the specified period of use of the water meter.

Repair

In order to prevent intervention to the meter, it is sealed after the calibration process.

When your meter goes out of order, or at the end of the sealing period, it will be inspected and adjusted at the water meter inspection and adjustment stations that have been authorized by the Ministry of Industry and Trade. Do not have your meter repaired by unauthorized and incompetent persons or companies.

Water meter repair and adjustment stations that have been established through the approval of the Ministry of Industry and Trade are authorized to perform inspection, repair and maintenance of water meters.

The inspection of the water meters must be carried out at the end of the inspection and stamp period.

Misuse

Cold water meters should not be used for hot water. Meters should not be used in places with sand, alluvium, mud, and waste water. Meters should be protected from external factors and impacts, and measures should be taken against frost, particularly in places where the temperature falls below 0°C. The peripheral and indicator of the meter should be kept clean and should not be wiped with chemicals that may damage the indicator. It is recommended to use a check valve on the outlet line of Woltman type water meters or to raise the outlet line by approximately 1 meter through using an elbow connection. Otherwise, your meter will not read correctly.

Items Required To Be Considered by Consumer

The meter should not be used under conditions that do not comply with the instructions stated in the user's manual, and outside its technical specifications and capacity. It should not be exposed to external impacts and frost. The meter should not be intervened from outside through breaking the seal that prevents intervention to the meter.

Product Support

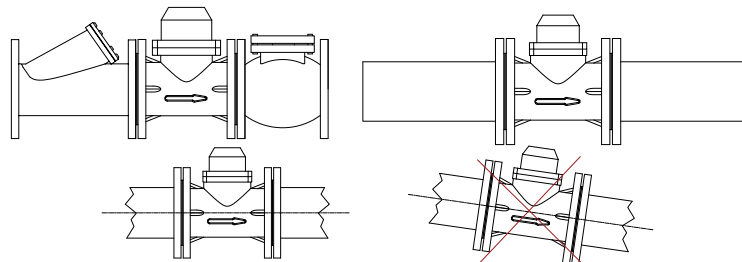
You can access all the necessary information about TURKOĞLU brand water meters from our following website. You can easily learn the necessary information from our sales representatives.

WARRANTY CONDITIONS

- The warranty period starts from the date the product is delivered and it is 2 years. (This period cannot be less than 2 years.)
- The entire product, including all its components are included in the warranty.
- If it is understood that the product is faulty, one of the rights included in article 11 of Law Regarding Protection of Consumer Number 6502 that are;
 - Reneged on contract,
 - Request discount on sale price,
 - Request free repair,
 - Request the sold product to be replaced with a non-faulty one, can be invoked.
- If the consumer opts for the right of free repair, the seller is obliged to conduct or have conducted the repair of the product without requesting cost of workmanship, replaced parts or any other fee. Consumer can use the right of free repair against the manufacturer or the importer as well. The seller, the manufacturer, and the importer are jointly liable for the exercise of this right of the consumer.
- If the consumer uses the right of free repair and;
 - if the product fails again during warranty period,
 - if the maximum term necessary to repair is exceeded,
 - if it is determined that repair is not possible by a report issued by authorized service station, seller, manufacturer or importer; consumer may request the refund of the product cost, a discount amounting to the fault or replacing the product with a non-faulty one, if possible. The seller may not refuse such a claim of the consumer. The seller, the manufacturer, and the importer are jointly liable in the event that this claim is not met.
- The repair period of the commodity must not exceed 20 business days. This period starts on the date of notification of the commodity related failure to the authorized service station or the seller, if within the warranty term, if not, starts on the date of delivery of the commodity to the authorized service station. In case that the product failure cannot be removed within 10 business days, the manufacturer or importer must provide another commodity with similar specifications until the repair is completed. In case that the commodity fails within the warranty period, the time spent in repair is added to the duration of warranty.
- When the user uses the product faultily (not obeying the instruction manual), then these failures are not under warranty.
- The consumer may apply to the Consumer Arbitration Committee or the Consumer Court located in the place of residence or place of consumer transaction for the conflicts that may result from the exercising of the rights arisen from the warranty.
- If this Warranty Certificate is not given by the seller, the consumer may apply to the Ministry of Trade, General Directorate of Consumer Protection and Market Surveillance.

OUT OF WARRANTY CASES

- The failures occurring in meters that are not protected from the negative effects of external atmospheric conditions (such as frost effect, mechanical impact, rain, mud, etc.),
- The failures to occur as a result of foreign substances in the installation and poor water quality,
- The failures to occur as a result of uses above the defined operating temperature, (The failures to occur as a result of using cold water meters above +50°C, (The failures to occur as a result of using hot water meters above +90° C.)
- The failures to occur as a result of passing liquids other than water from meters,
- The failures resulting from using the meter contrary to the items stated in the user's manual are **OUT OF WARRANTY**.
- The meter with no safety label and/or stamp specific for the meters are out of warranty.



ÜRETİCİ / The Manufacturer	ŞENSOYLAR Klape Tesisat Malzemeleri Sanayi ve Ticaret Ltd. Şti.	
ADRES / Address	Bakırçılar ve Piriçingül Sanayi Sitesi Menekşe Cad.No:13 Beyliküzü/İSTANBUL	
Telefon / Faks / Phone and Fax	+90 (212) 879 10 30 - 31 — +90 (212) 879 10 32	
Elektronik Ağ / Web and E-Mail	www.turkoglumeters.com - info@turkoglumeters.com	
Aşağıda tarif edilen ürünün / The product described below		
ÜRÜNÜN ADI / Product Name	Su sayacı / Water Meter	
Model / Type	1.Sayıfada Belirtilmiştir. / Listed on the first page	
Seri No.su / Serial Number	1.Sayıfada belirtilmiştir. / Listed on the first page	
Aşağıda Belirtilen Avrupa Mevzuatına / The following European Directives		
Referans No.su / Reference No	Başlık / Title	
2014/32/EU	Ölçü Aletleri Yönetmeliği / Measuring Instrument Directive	
768/2008/EC	Decision No 768/2008/EC of the European Parliament and of the Council of 9 July 2008 on a common framework for the marketing of products,	
EC Tip İnceleme Sertifikası No / EC Type Examination Certificate No	Aşağıdaki Tabloda verilmiştir.	
Modül D için Uygunluk Değerlendirme Kuruluşu ve Modül D No / Conformity Assessment given in the table below for Module D and module D No	MISCAREE ROMANA PENTRU CALITATE RO-2275-18-309	
Onaylanmış Kuruluş Kimlik No / Notified Bodies Identification No	2275	
Model / Type	AB Tip İnceleme Sertifikası No. / EC Type Examination Certificate No	Uygunluk Değerlendirme Yapan Kuruluşun Adı / Notified Bodies Name
YIGIT W 50-300T	TCM 14214-5157	MISCAREE ROMANA PENTRU CALITATE
ERCİYES MDD 15-50T	TCM 14214-5171	Craiova Str.Panaitii, nr.8 Jud. Dolj
ALTAY MHD 15-50T	TCM 14214-5170	Country : ROMANIA
KAKCAR MH 15-50T	TCM 14214-5169	Phone : +40 351 45 1047
ONYLA MH 15-50T	RO-2275-15287	Fax : +40 251 54 5553
NİL SHD 15-50T	TCM 14214-5172	Website : www.truco.ro
MELEN, İLGIN	T-10642	
MERCAN MD 15-50T	RO-2275-15286	
ALP	T-10643	
AYDOS, ATLAS, SUPHAN, BARAN, KURE, KINETIC, SİLE, RIVA, ERCİYES II	T-10644	Notified Body number : 2275
Ürün olarak üretilmiş beyan edeniz. / We declare that water meters are produced in accordance with		
Üretim Yeri / Production Place	ŞENSOYLAR ADINA – İmza Kaşe / Signed by the authorization of ŞENSOYLAR	
Beyliküzü / İstanbul / Türkiye		

SU SAYAÇLARI BAKIM, KULLANMA VE MONTAJ TALİMATI GARANTİ BELGESİ VE UYGUNLUK DEKLARASYONU		
Üretici Firma / Manufacturer	Şensoylar Klape Tesisat Malzemeleri Sanayi ve Ticaret Ltd. Şti	
Adres / Address	Bakırçılar ve Piriçingül Sanayi Sitesi Menekşe Caddesi No:13 Beyliküzü/İSTANBUL	
Telefon & Faks / Telephone & Fax	+90 (212) 879 10 30 - 31 — +90 (212) 879 10 32	
Web – E-Mail	www.turkoglumeters.com - info@turkoglumeters.com	
Ticaret Sicil No.su / Commercial Register No	388247	
Sanayi Sicil No.su / Industry Register No	579696	
ÜRÜN / PRODUCT		
Cinsi/Type	Su sayacı/Water meter	Garanti Süresi/Guarantee Period (time) 2 Yıl (year)
Markası/Brand	Türkoglu	Azami Tamir Süresi/Max Repair Time 20 iş günü (working days)
SATICI FİRMA / BAYİİ BİLGİLERİ / SELLER COMPANY / DEALER DETAILS		
Ticari Unvanı / Trade Name		
Ticari Adresi / Trade Address		
Telefon & Faks / Telephone & Fax		
Fatura Tarihi / Invoice Date		
Fatura No.su / Invoice No		
Satış tarihi / Sales Date		
İmza & Kaşe / Signature & Stamp		
Yukarıda Boş bırakılan Kısımlar "ÜRÜN TESLİMİ" sırasında Satıcı Firma veya bayi tarafından doldurulacaktır. (The spaces left blank above will be filled by the seller or dealer/company during the "product delivery")		
AÇIKLAMA: Bu Garanti Belgesi; 13.06.2014 tarih ve 29029 sayılı Resmî Gazete'de yayımlanarak yürürlüğe giren "GARANTİ BELGESİ YÖNETMELİĞİ" Hükümlerine uygun olarak düzenlenmiştir.		
Mİ Mi CE M 1383-2275-0122		